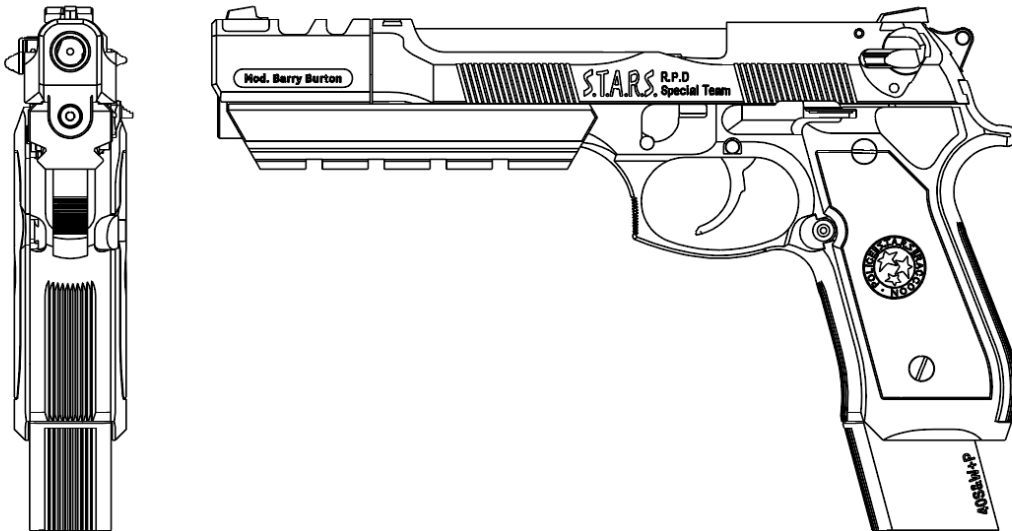




BARRY BURTON COMPENSATOR KIT

ITEM NO.

SE03-COMP / SE03-COMP-V1.5 / SE03-COMP-V2



INSTALLATION GUIDE

Introduction:

A **Kendo Custom Shop** exclusive, the **Samurai Edge Barry Burton Model Compensator Kit** takes the already successful Samurai Edge family of pistols to the next level. Originally developed for law enforcement use under the strict specifications set forth by Mr. Barry Burton of the Raccoon Police Department, this compensator kit is easily retrofitted to most current R.P.D. issue Beretta 92/96 Samurai Edge pistols and provides unparalleled enhancement for rapid firing stability. **Kendo Custom Shop** is proud to offer this sought-after product to law abiding citizens nationwide. Special thanks go to Mr. Barry Burton for his contribution to this project.

To ensure the full functionality of your kit and to avoid damage to your firearm, we recommend that the installation be performed by a qualified gunsmith. Please read this guide carefully prior to installation.

WARNING: Ensure your firearm is unloaded and safety checked before starting any work!

Section 1: Parts and Compatibility Review

- 1.1 Please review the Parts List located on the last page and ensure that all the parts are present.
- 1.2 This kit is designed to work with the following firearm models and accessories:
 - Beretta 92/96 full size, standard/Brigadier models with straight style, non-railed dust cover frame*.



This kit is not designed to work the following models including, but not limited to: **Compact, Centurion, any models with integral accessory rail, slanted dust cover frame, heel magazine release and/or frame mounted safety/decocker lever.** If you're unsure of your firearm's compatibility, please contact us and we will gladly help you.

Section 2: Installation

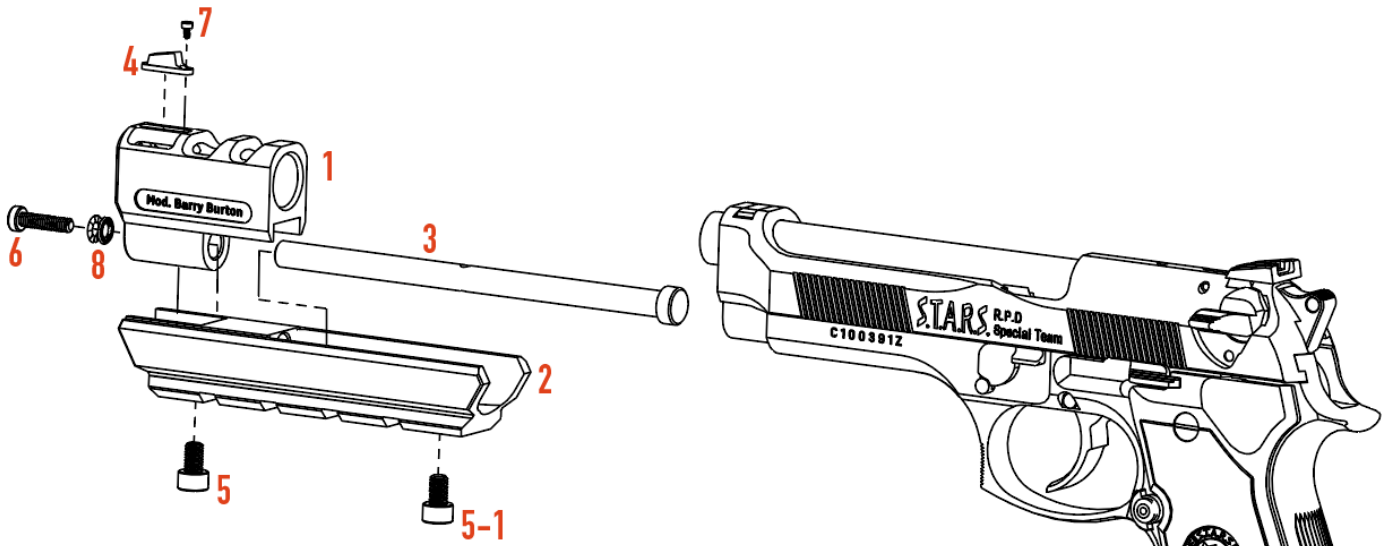
- 2.1 Your Compensator Kit will arrive pre-assembled.
- 2.2 Remove the **Guide Rod (No.3)** from the assembly by unscrewing the **M4 screw (No. 6)** using the supplied 2.5mm hex key. Be careful not to lose the 2-piece **wedge lock washer (No.8)**.
- 2.3 Replace the OEM guide rod with **Guide Rod** and reassemble the firearm.
- 2.4 Lock the slide open and rotate the **Guide Rod** until the cross hole is oriented at the 11 o' clock position when viewed from the muzzle.
- 2.5 Insert the **Compensator Assembly (No. 1, 2, 4, 5, 5-1, 6, 7, 8)** by aligning the guide rod hole to the **Guide Rod**, ensure the compensator is in the upright position and slide the assembly all the way in.
- 2.6 Fasten the **M4 Screw** with the **Wedge lock Washer** to the end of the **Guide Rod** through the **Compensator (No.1)**. Do not fully tighten the screw at this point.
- 2.7 Insert the supplied **1.5mm hex key** to the cross hole on the guide rod to use it as a counter lever, then tighten the Compensator Screw with the supplied **2.5mm hex key**.
- 2.8 Double check the various screws for tightness. However, be careful not to over torque the **M1.5 Screw (No.7)** as it is delicate and may break. Note that the **M5 Screw (No. 5-1)** is cosmetic by design and only screws into the **Accessory Rail (No.2)**.
- 2.9 Due to varying tolerances between factory frames, the Front-End Assembly may exhibit slight play and a tendency to cant slightly to one side. While this does not affect the function of the firearm; you may optionally reduce this condition by placing electrical tape on the inside of the Accessory Rail as needed.

2.10 A small gap (approx. 0.5mm) should be present between the slide and the Compensator. The front face of the slide should never come into contact with the back face of the compensator when in battery.

Section 3: Function & Safety Inspection

3.1 Perform a final function/safety check of firearm and ensure all operations are smooth without any signs of resistance or binding.

3.2 Installation Complete, enjoy your newly enhanced Samurai Edge Barry Burton Model!



PARTS LIST		
NO.	PART	QTY
1	COMPENSATOR PIECE	1
2	RAIL, ACCESSORY	1
3	GUIDE ROD	1
4	SIGHT, FRONT	1
5	M5 SCREW	1
5-1	M5 SCREW (COSMETIC)	1
6	M4 SCREW, STAINLESS	1
7	M1.6 SCREW	1
8	WASHER, WEDGELOCK	1
9	HEX KEY SET*	1

*NOT SHOWN